

LINEAR GUIDEWAY



PMI LİNEAR ARABA, RAY VE VİDALI MİL KATALOĞU

2014 FİYAT LİSTESİ



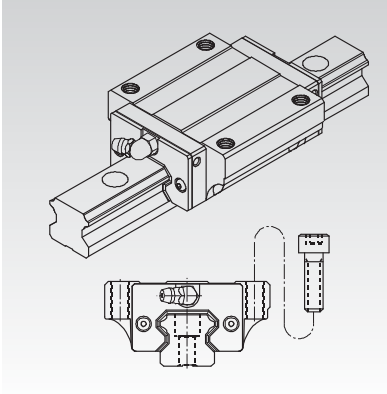
Araba ve Linear Raylar

ARABA TİPİ

MSA Serisi Ağır Yük Tipleri

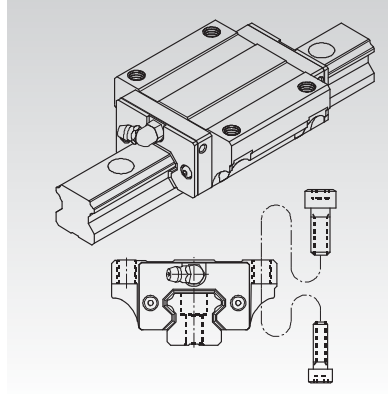
Ağır Yük Tipleri

MSA-A Tipi



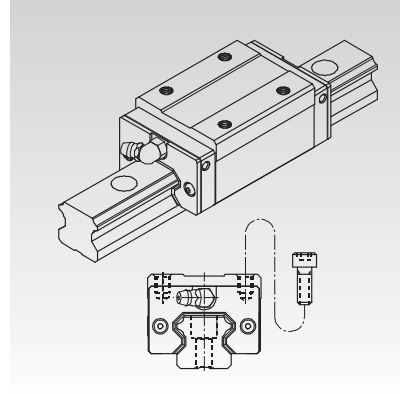
Arabanın üst tarafından monte edilir dış uzunluğu MSA-E tipinden daha fazladır. Geniş Tip.

MSA-E Tipi



Bu tip araba hem üstten hemde alttan monte edilebilir. Geniş Tip.

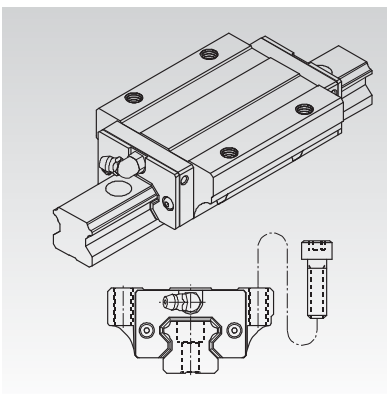
MSA-S Tipi



Üstten bağlanabilen. Dar tip.

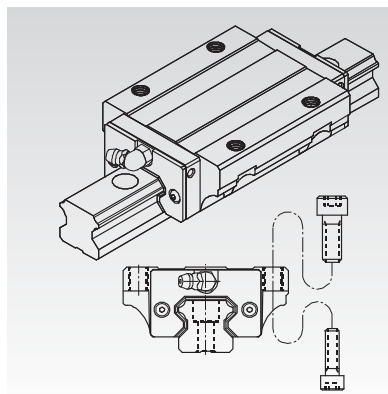
Aşırı Ağır Yük Tipleri

MSA-LA Tipi



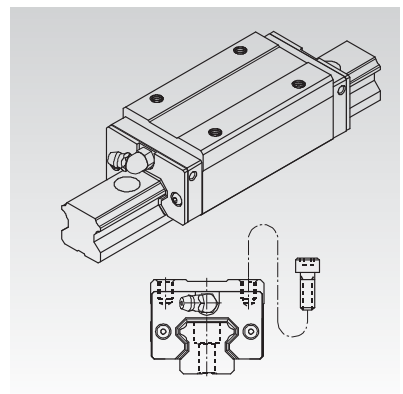
MSA-A ile aynı özelliklerde üstten bağlanabilen daha fazla sertlik sağlayan, geniş uzun tip.

MSA-LE Tipi



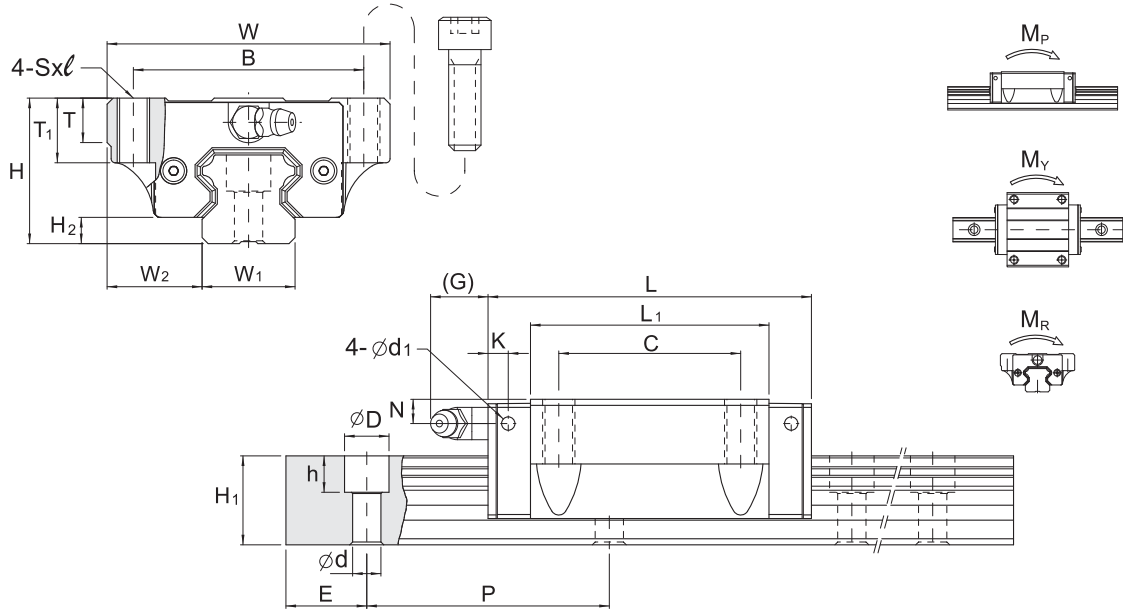
MSA-E ile aynı özelliklerde üstten ve alttan bağlanabilen daha fazla sertlik sağlayan, geniş uzun tip.

MSA-LS Tipi



MSA-S ile aynı özelliklerde üstten bağlanabilen daha fazla sertlik sağlayan, dar uzun tip.

MSA A / MSA LA SERİSİ

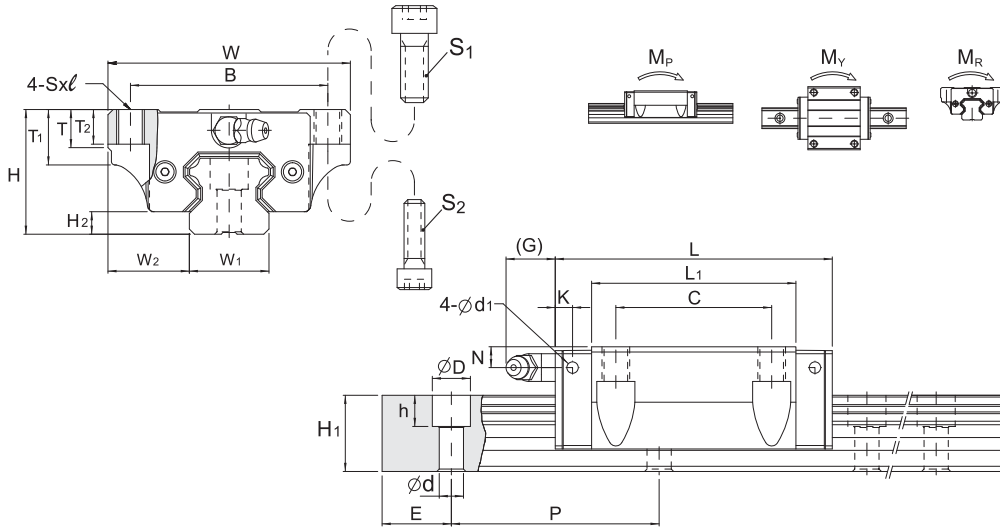


Unit: mm

Model No.	Dış ölçüler					Araba ölçüleri											Yağdanlık
	Yükseklik H	Genişlik W	Uzunluk L	W ₂	H ₂	B	C	S×ℓ	L ₁	T	T ₁	N	G	K	d ₁		
MSA 15 A	24	47	56.3	16	4.2	38	30	M5×11	39.3	7	11	4.3	7	3.2	3.3	G-M4	
MSA 20 A MSA 20 LA	30	63	72.9 88.8	21.5	5	53	40	M6×10	51.3 67.2	7	10	5	12	5.8	3.3	G-M6	
MSA 25 A MSA 25 LA	36	70	81.6 100.6	23.5	6.5	57	45	M8×16	59 78	11	16	6	12	5.8	3.3	G-M6	
MSA 30 A MSA 30 LA	42	90	97 119.2	31	8	72	52	M10×18	71.4 93.6	11	18	7	12	6.5	3.3	G-M6	
MSA 35 A MSA 35 LA	48	100	111.2 136.6	33	9.5	82	62	M10×21	81 106.4	13	21	8	11.5	8.6	3.3	G-M6	
MSA 45 A MSA 45 LA	60	120	137.7 169.5	37.5	10	100	80	M12×25	102.5 134.3	13	25	10	13.5	10.6	3.3	G-PT1/8	

Model No.	Ray ölçüleri					Temel yük oranı		Statik moment oranı				Ağırlık		
	Genişlik W ₁	Yükseklik H ₁	Hatve P	E std.	D×h×d	Dinamik C kN	Statik C ₀ kN	M _P kN-m		M _Y kN-m		M _R kN-m	Araba kg	Ray kg/m
								Tek	Çift	Tek	Çift			
MSA 15 A	15	15	60	20	7.5×5.3×4.5	11.8	18.9	0.12	0.68	0.12	0.68	0.14	0.18	1.5
MSA 20 A MSA 20 LA	20	18	60	20	9.5×8.5×6	19.2 23.3	29.5 39.3	0.23 0.39	1.42 2.23	0.23 0.39	1.42 2.23	0.29 0.38	0.4 0.52	2.4
MSA 25 A MSA 25 LA	23	22	60	20	11×9×7	28.1 34.4	42.4 56.6	0.39 0.67	2.20 3.52	0.39 0.67	2.20 3.52	0.48 0.63	0.62 0.82	3.4
MSA 30 A MSA 30 LA	28	26	80	20	14×12×9	39.2 47.9	57.8 77.0	0.62 1.07	3.67 5.81	0.62 1.07	3.67 5.81	0.79 1.05	1.09 1.43	4.8
MSA 35 A MSA 35 LA	34	29	80	20	14×12×9	52.0 63.6	75.5 100.6	0.93 1.60	5.47 8.67	0.93 1.60	5.47 8.67	1.25 1.67	1.61 2.11	6.6
MSA 45 A MSA 45 LA	45	38	105	22.5	20×17×14	83.8 102.4	117.9 157.3	1.81 3.13	10.67 16.95	1.81 3.13	10.67 16.95	2.57 3.43	2.98 3.9	11.5

MSA-E / MSA-LE SERİSİ



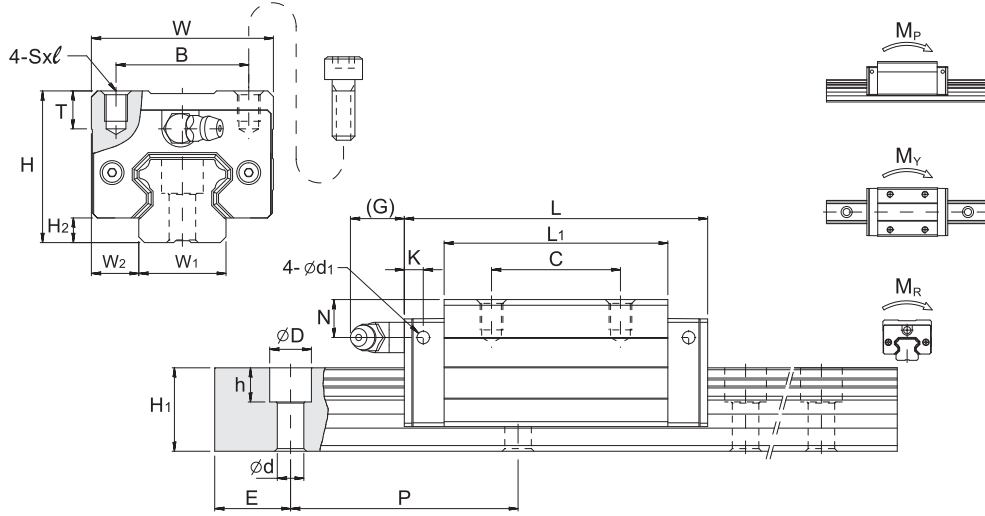
Model No.	Bolt Size	
	S ₁	S ₂
MSA 15	M5	M4
MSA 20	M6	M5
MSA 25	M8	M6
MSA 30	M10	M8
MSA 35	M10	M8
MSA 45	M12	M10
MSA 55	M14	M12
MSA 65	M16	M14

Unit: mm

Model No.	Dış ölçüler					Araba ölçüleri												Yağdanlık
	Yükseklik H	Genişlik W	Uzunluk L	W ₂	H ₂	B	C	S×l	L ₁	T	T ₁	T ₂	N	G	K	d ₁		
MSA 15 E	24	47	56.3	16	4.2	38	30	M5×7	39.3	7	11	7	4.3	7	3.2	3.3	G-M4	
MSA 20 E MSA 20 LE	30	63	72.9 88.8	21.5	5	53	40	M6×10	51.3 67.2	7	10	10	5	12	5.8	3.3	G-M6	
MSA 25 E MSA 25 LE	36	70	81.6 100.6	23.5	6.5	57	45	M8×10	59 78	11	16	10	6	12	5.8	3.3	G-M6	
MSA 30 E MSA 30 LE	42	90	97 119.2	31	8	72	52	M10×10	71.4 93.6	11	18	10	7	12	6.5	3.3	G-M6	
MSA 35 E MSA 35 LE	48	100	111.2 136.6	33	9.5	82	62	M10×13	81 106.4	13	21	13	8	11.5	8.6	3.3	G-M6	
MSA 45 E MSA 45 LE	60	120	137.7 169.5	37.5	10	100	80	M12×15	102.5 134.3	13	25	15	10	13.5	10.6	3.3	G-PT 1/8	
MSA 55 E MSA 55 LE	70	140	161.5 199.5	43.5	13	116	95	M14×17	119.5 157.5	19	32	17	11	13.5	8.6	3.3	G-PT 1/8	
MSA 65 E MSA 65 LE	90	170	199 253	53.5	15	142	110	M16×23	149 203	21.5	37	23	19	13.5	8.6	3.3	G-PT 1/8	

Model No.	Ray ölçüleri					Temel yük oranı		Statik moment oranı					Ağırlık	
	Genişlik W ₁	Yükseklik H ₁	Hatve P	E std.	D×h×d	Dinamik C kN	Statik C ₀ kN	M _p kN-m		M _y kN-m		M _r kN-m	Araba kg	Ray kg/m
								Tek	Çift	Tek	Çift			
MSA 15 E	15	15	60	20	7.5×5.3×4.5	11.8	18.9	0.12	0.68	0.12	0.68	0.14	0.18	1.5
MSA 20 E MSA 20 LE	20	18	60	20	9.5×8.5×6	19.2 23.3	29.5 39.3	0.23 0.39	1.42 2.23	0.23 0.39	1.42 2.23	0.29 0.38	0.4 0.52	2.4
MSA 25 E MSA 25 LE	23	22	60	20	11×9×7	28.1 34.4	42.4 56.6	0.39 0.67	2.20 3.52	0.39 0.67	2.20 3.52	0.48 0.63	0.62 0.82	3.4
MSA 30 E MSA 30 LE	28	26	80	20	14×12×9	39.2 47.9	57.8 77.0	0.62 1.07	3.67 5.81	0.62 1.07	3.67 5.81	0.79 1.05	1.09 1.43	4.8
MSA 35 E MSA 35 LE	34	29	80	20	14×12×9	52.0 63.6	75.5 100.6	0.93 1.60	5.47 8.67	0.93 1.60	5.47 8.67	1.25 1.67	1.61 2.11	6.6
MSA 45 E MSA 45 LE	45	38	105	22.5	20×17×14	83.8 102.4	117.9 157.3	1.81 3.13	10.67 16.95	1.81 3.13	10.67 16.95	2.57 3.43	2.98 3.9	11.5
MSA 55 E MSA 55 LE	53	44	120	30	23×20×16	123.6 151.1	169.8 226.4	3.13 5.40	17.57 28.11	3.13 5.40	17.57 28.11	4.50 6.00	4.17 5.49	15.5
MSA 65 E MSA 65 LE	63	53	150	35	26×22×18	198.8 253.5	265.3 375.9	6.11 11.84	33.71 57.32	6.11 11.84	33.71 57.32	8.36 11.84	8.73 11.89	21.9

MSA-S / MSA-LS SERİSİ



Unit: mm

Model No.	Dış ölçüler					Araba ölçüleri									Yağdanlık
	Yükseklik H	Genişlik W	Uzunluk L	W ₂	H ₂	B	C	S × l	L ₁	T	N	G	K	d ₁	
MSA 15 S	28	34	56.3	9.5	4.2	26	26	M4×5	39.3	7.2	8.3	7	3.2	3.3	G-M4
MSA 20 S	30	44	72.9	12	5	32	36	M5×6	51.3	8	5	12	5.8	3.3	G-M6
MSA 20 LS			88.8						67.2						
MSA 25 S	40	48	81.6	12.5	6.5	35	35	M6×8	59	10	10	12	5.8	3.3	G-M6
MSA 25 LS			100.6						78						
MSA 30 S	45	60	97	16	8	40	40	M8×10	71.4	11.7	10	12	6.5	3.3	G-M6
MSA 30 LS			119.2						93.6						
MSA 35 S	55	70	111.2	18	9.5	50	50	M8×12	81	12.7	15	11.5	8.6	3.3	G-M6
MSA 35 LS			136.6						106.4						
MSA 45 S	70	86	137.7	20.5	10	60	60	M10×17	102.5	16	20	13.5	10.6	3.3	G-PT 1/8
MSA 45 LS			169.5						134.3						
MSA 55 S	80	100	161.5	23.5	13	75	75	M12×18	119.5	18	21	13.5	8.6	3.3	G-PT 1/8
MSA 55 LS			199.5						157.5						
MSA 65 S	90	126	199	31.5	15	76	70	M16×20	149	23	19	13.5	8.6	3.3	G-PT 1/8
MSA 65 LS			253						203						

Model No.	Ray ölçüleri					Temel yük oranı		Statik moment oranı					Ağırlık	
	Genişlik W ₁	Yükseklik H ₁	Hatve P	E std.	D × h × d	Dinamik C kN	Statik C ₀ kN	M _p kN-m		M _y kN-m		M _R kN-m	Araba kg	Ray kg/m
								Tek	Çift	Tek	Çift			
MSA 15 S	15	15	60	20	7.5×5.3×4.5	11.8	18.9	0.12	0.68	0.12	0.68	0.14	0.18	1.5
MSA 20 S	20	18	60	20	9.5×8.5×6	19.2	29.5	0.23	1.42	0.23	1.42	0.29	0.3	2.4
MSA 20 LS								0.39	2.23	0.39	2.23	0.38	0.39	
MSA 25 S	23	22	60	20	11×9×7	28.1	42.4	0.39	2.20	0.39	2.20	0.48	0.52	3.4
MSA 25 LS								0.67	3.52	0.67	3.52	0.63	0.68	
MSA 30 S	28	26	80	20	14×12×9	39.2	57.8	0.62	3.67	0.62	3.67	0.79	0.86	4.8
MSA 30 LS								1.07	5.81	1.07	5.81	1.05	1.12	
MSA 35 S	34	29	80	20	14×12×9	52.0	75.5	0.93	5.47	0.93	5.47	1.25	1.45	6.6
MSA 35 LS								1.60	8.67	1.60	8.67	1.67	1.9	
MSA 45 S	45	38	105	22.5	20×17×14	83.8	117.9	1.81	10.67	1.81	10.67	2.57	2.83	11.5
MSA 45 LS								3.13	16.95	3.13	16.95	3.43	3.7	
MSA 55 S	53	44	120	30	23×20×16	123.6	169.8	3.13	17.57	3.13	17.57	4.50	4.12	15.5
MSA 55 LS								5.40	28.11	5.40	28.11	6.00	4.91	
MSA 65 S	63	53	150	35	26×22×18	198.8	265.3	6.11	33.71	6.11	33.71	8.36	6.43	21.9
MSA 65 LS								11.84	57.32	11.84	57.32	11.84	8.76	

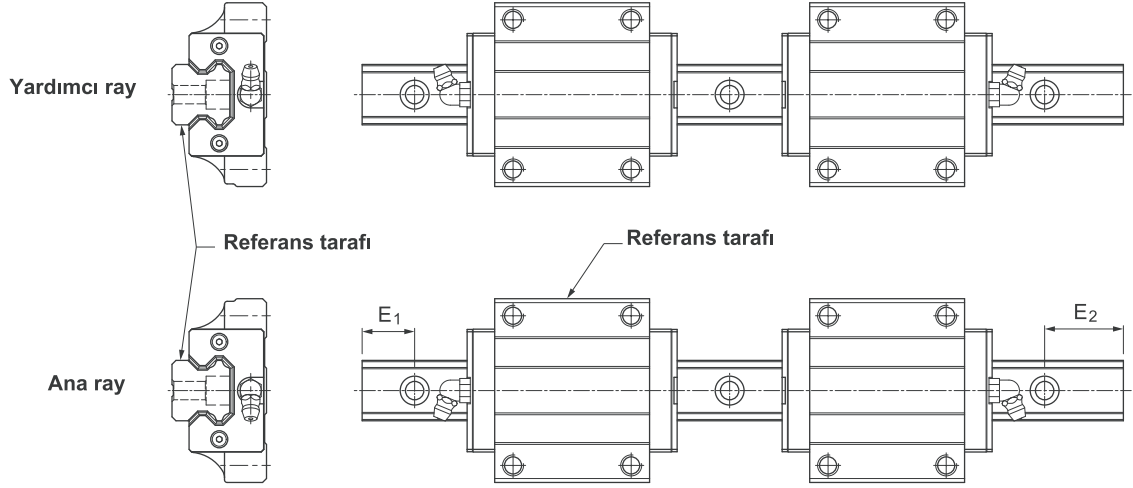


Fig12.1

KODLARIN AÇILIMI

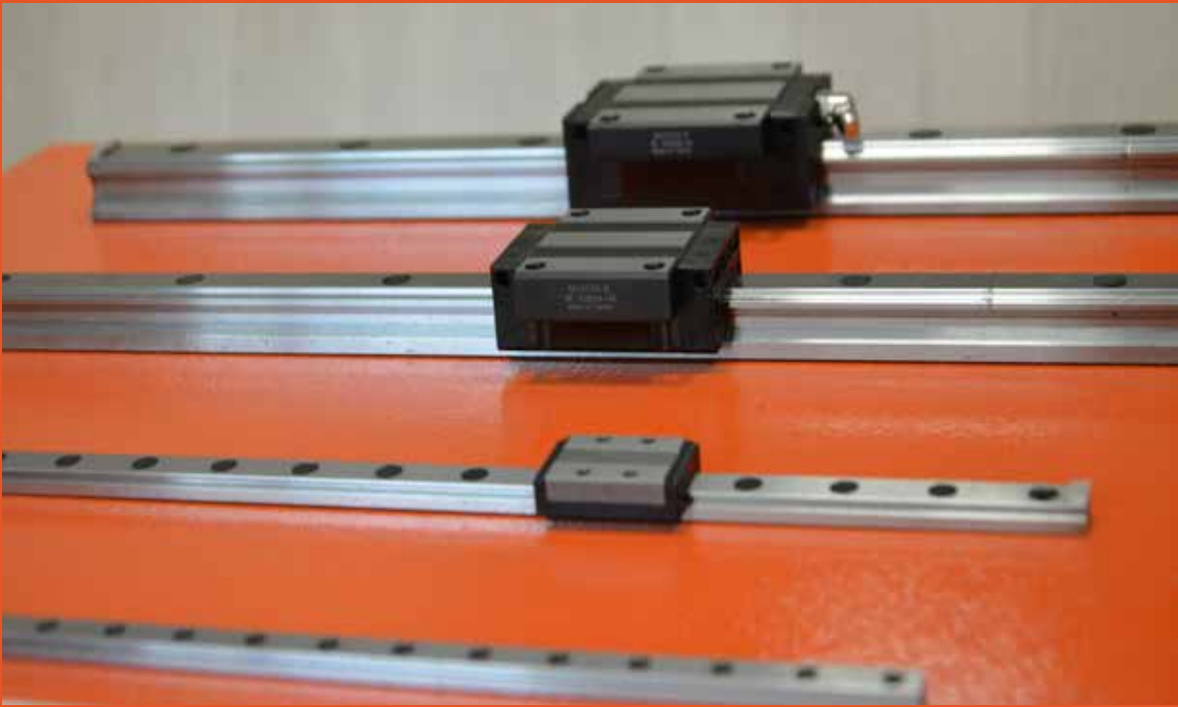
Araba Kodu

	MSA	25	A	SS	FC	N	A
Seri: MSA							
Boyut: 15, 20, 25, 30, 35, 45, 55, 65							
Araba tipi: (1) Ağır yük							
A: Flanş tip, üstten montaj							
E: Flanş tip, üstten veya alttan montaj							
S: Kare tip							
(2) Aşırı ağır yük							
LA: Flanş tip, üstten montaj							
LE: Flanş tip, üstten veya alttan montaj							
LS: Kare tip							
Araba toz koruma seçeneği: Simge yok, UU, SS, ZZ, DD, KK, LL, RR							
Ön yük: FC (Hafif ön yük)							
Hassaslık derecesi: N, H							
Özel ray kodu: Simge yok, A, B. . .							

Ray Kodu

	MSA	25	R	1200	-20	/40	N	A	/CC
Seri: MSA									
Boyut: 15, 20, 25, 30, 35, 45, 55, 65									
Ray tipi: R (Havşa Tipi), T (Dişli Vida Delikli Tip)									
Ray uzunluğu (mm)									
Başlangıç tarafında Ray delik hatvesi (E1, bakınız Şekil 12.1)									
Uç tarafında Ray delik hatvesi (E2, bakınız Şekil 12.1)									
Hassaslık derecesi: N, H									
Özel ray kodu: Simge yok, A, B. . .									
Ray toz koruma seçeneği: Simge yok, /CC, /MC									

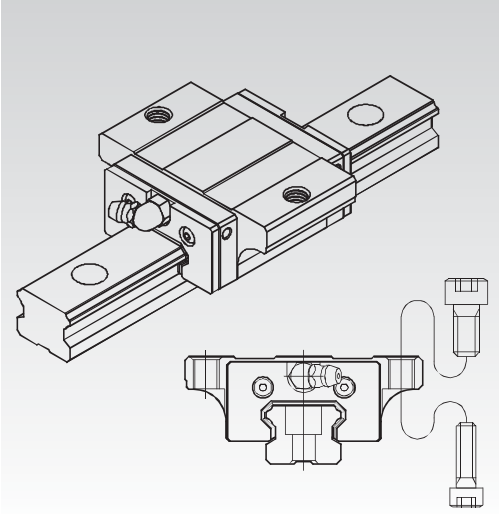
PMI
Linear Motion Systems



MSB SERİSİ ALÇAK TİP ARABALAR

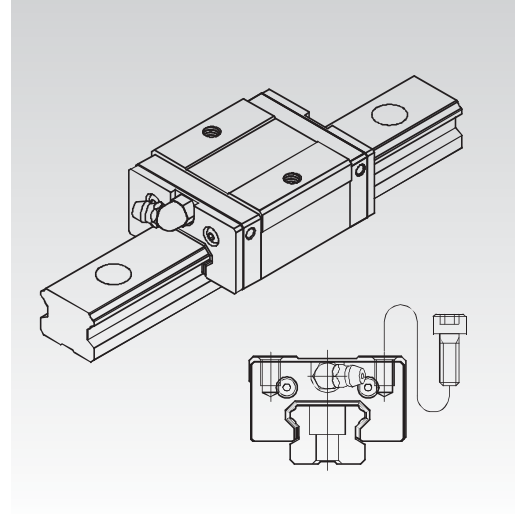
Orta Yük

MSB-TE Tipi



Bu tip araba hem üstten hemde alttan monte sağlar. Geniş alçak tip

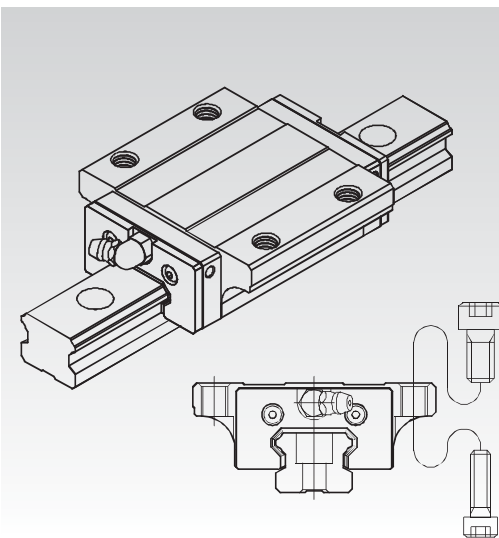
MSB-TS Tipi



Daha küçük kalınlıkta kare tipidir ve arabanın üstünden monte edilir. Dar alçak tip

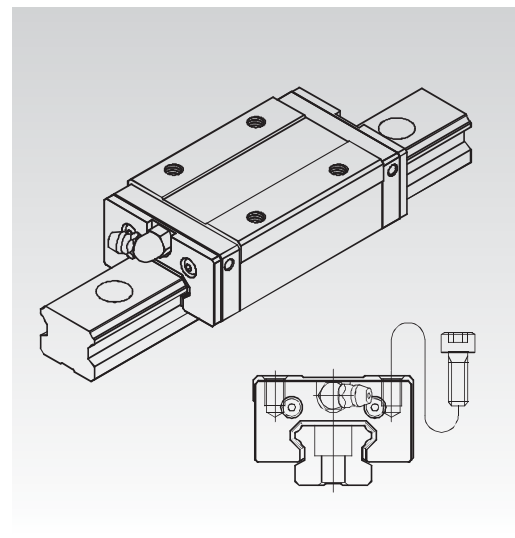
Ağır Yük

MSB-E Tipi



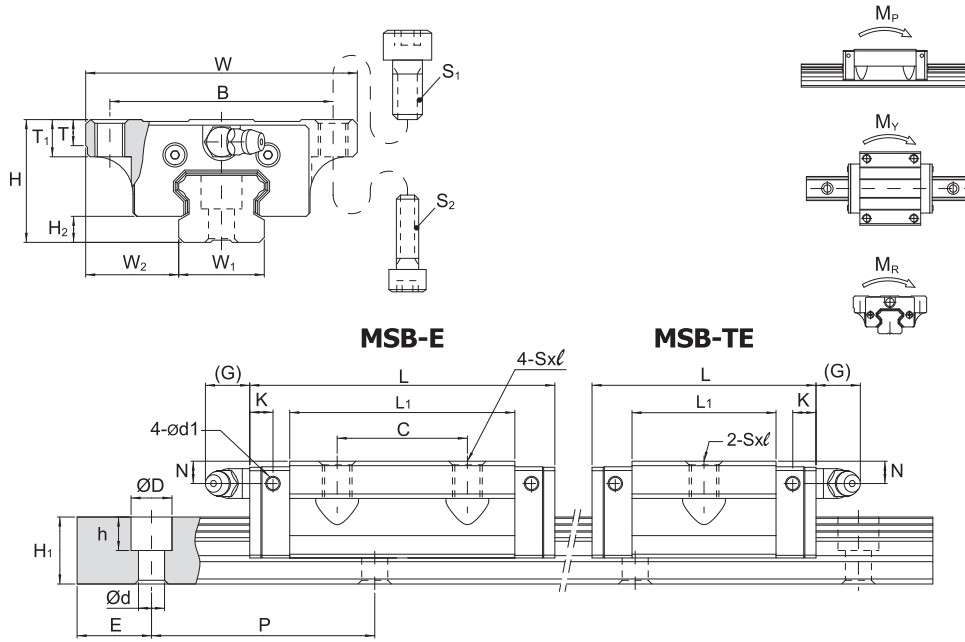
Daha fazla sertlik sağlayan üstten ve alttan bağlanabilen. Geniş alçak tip.

MSB-S Tipi



Daha fazla sertlik sağlayan üstten bağlanabilen. Dar alçak tip.

MSB-TE / MSB-E SERİSİ



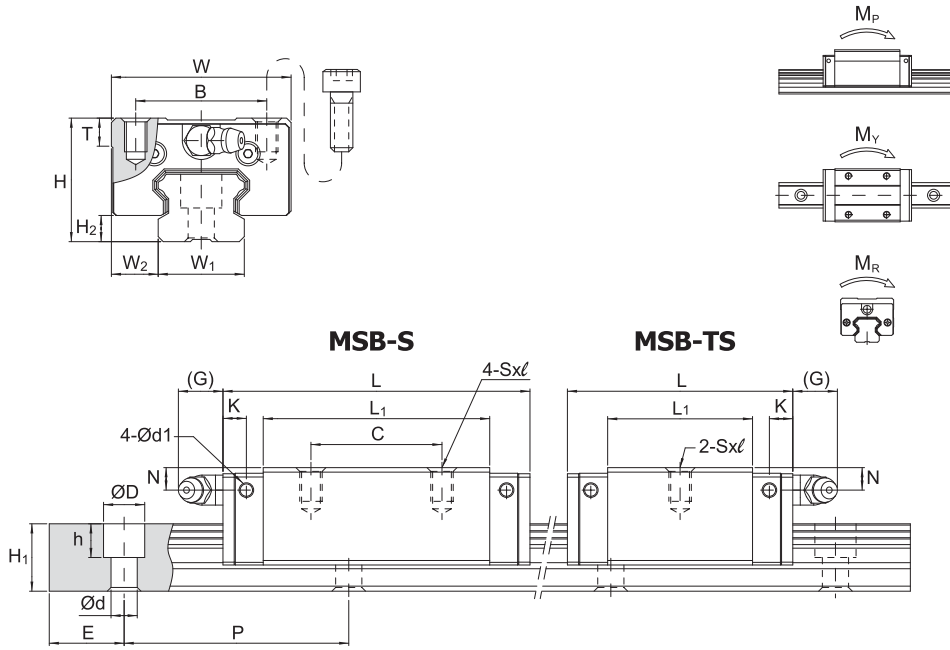
Model No.	Bolt Size	
	S ₁	S ₂
MSB 15	M5	M4
MSB 20	M6	M5
MSB 25	M8	M6
MSB 30	M10	M8
MSB 35	M10	M8

Unit: mm

Model No.	Dış ölçüler					Araba ölçüleri										
	Yükseklik H	Genişlik W	Uzunluk L	W ₂	H ₂	B	C	S x L	L ₁	T	T ₁	N	G	K	d ₁	Yağdanlık
MSB 15 TE MSB 15 E	24	52	40 57	18.5	4.5	41	- 26	M5x7	23.5 40.5	5	7	5.5	5.5	5.1	3.3	G-M4
MSB 20 TE MSB 20 E	28	59	48 67	19.5	6	49	- 32	M6x9	29 48	5	9	5.5	12	5.9	3.3	G-M6
MSB 25 TE MSB 25 E	33	73	60.2 82	25	7	60	- 35	M8x10	38.7 60.5	7	10	6	12	6.3	3.3	G-M6
MSB 30 TE MSB 30 E	42	90	68 96.7	31	9.5	72	- 40	M10x10	43.3 72	7	10	8	12	6.3	3.3	G-M6
MSB 35 TE MSB 35 E MSB 35 LE	48	100	78 112 137.5	33	9.5	82	- 50 72	M10x13	46 80 105.5	9	13	8.5	12	9.8	3.3	G-M6

Model No.	Ray ölçüleri					Temel yük oranı		Statik moment oranı				Ağırlık		
	Genişlik W ₁	Yükseklik H ₁	Hatve P	E std.	D x h x d	Dinamik C kN	Statik C ₀ kN	M _p kN-m		M _v kN-m		M _R kN-m	Araba kg	Ray kg/m
								Tek	Çift	Tek	Çift			
MSB 15 TE MSB 15 E	15	12.5	60	20	6x4.5x3.5 (7.5x5.3x4.5)	6.7 10.0	9.6 16.9	0.04 0.10	0.26 0.61	0.04 0.10	0.26 0.61	0.07 0.13	0.12 0.21	1.2
MSB 20 TE MSB 20 E	20	15	60	20	9.5x8.5x6	9.7 13.9	14.2 23.6	0.07 0.18	0.44 0.97	0.07 0.18	0.44 0.97	0.14 0.24	0.20 0.34	2
MSB 25 TE MSB 25 E	23	18	60	20	11x9x7	15.6 22.3	22.1 36.9	0.13 0.35	0.91 1.87	0.13 0.35	0.91 1.87	0.26 0.43	0.39 0.60	3
MSB 30 TE MSB 30 E	28	23	80	20	11x9x7	23.1 32.9	31.8 53.1	0.23 0.60	1.39 3.15	0.23 0.60	1.39 3.15	0.45 0.74	0.65 1.08	4.4
MSB 35 TE MSB 35 E MSB 35 LE	34	27.5	80	20	14x12x9	35.7 52.0 63.6	44.0 75.5 100.6	0.34 0.93 1.60	2.81 5.47 8.67	0.34 0.93 1.60	2.81 5.47 8.67	0.75 1.28 1.67	0.91 1.61 1.80	6.2

MSB-TS / MSB-S SERİSİ

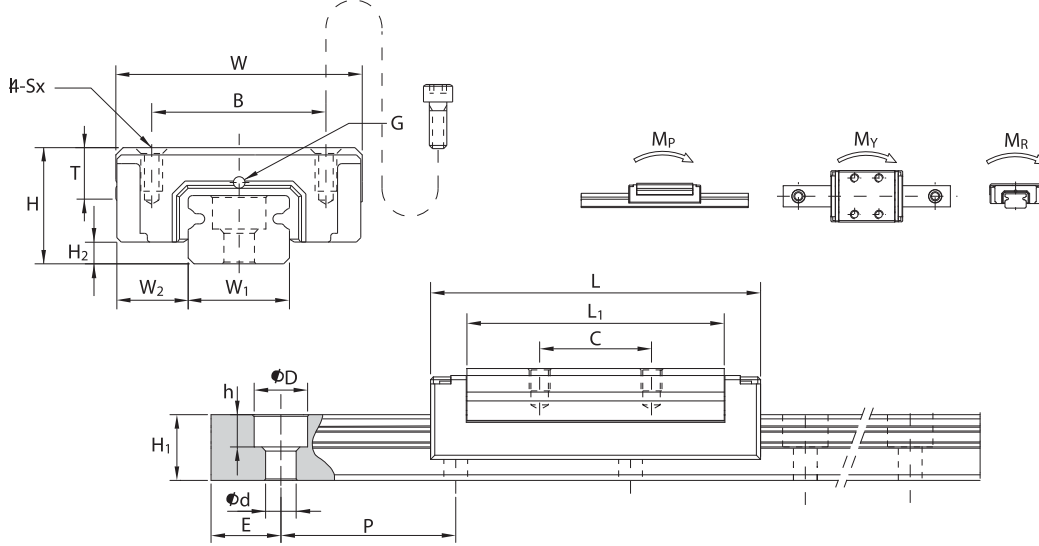


Unit: mm

Model No.	Dış ölçüler					Araba ölçüleri										Yağdanlık
	Yükseklik H	Genişlik W	Uzunluk L	W ₂	H ₂	B	C	S × ℓ	L ₁	T	N	G	K	d ₁		
MSB 15 TS MSB 15 S	24	34	40 57	9.5	4.5	26	- 26	M4×6	23.5 40.5	6	5.5	5.5	5.1	3.3	G-M4	
MSB 20 TS MSB 20 S	28	42	48 67	11	6	32	- 32	M5×7	29 48	6	5.5	12	5.9	3.3	G-M6	
MSB 25 TS MSB 25 S	33	48	60.2 82	12.5	7	35	- 35	M6×9	38.7 60.5	8	6	12	6.3	3.3	G-M6	
MSB 30 TS MSB 30 S	42	60	68 96.7	16	9.5	40	- 40	M8×12	43.3 72	8	8	12	6.3	3.3	G-M6	
MSB 35 TS MSB 35 S MSB 35 LS	48	70	78 112 137.5	18	9.5	50	- 50 72	M8×12	46 80 105.5	12.5	8.5	11.5	9.8	3.3	G-M6	

Model No.	Ray ölçüleri					Temel yük oranı		Statik moment oranı				Ağırlık		
	Genişlik W ₁	Yükseklik H ₁	Hatve P	E std.	D × h × d	Dinamik C kN	Statik C ₀ kN	M _p kN-m		M _y kN-m		M _r kN-m	Araba kg	Ray kg/m
								Tek	Çift	Tek	Çift			
MSB 15 TS MSB 15 S	15	12.5	60	20	6×4.5×3.5 (7.5×5.3×4.5)	6.7 10.0	9.6 16.9	0.04 0.10	0.26 0.61	0.04 0.10	0.26 0.61	0.07 0.13	0.09 0.16	1.2
MSB 20 TS MSB 20 S	20	15	60	20	9.5×8.5×6	9.7 13.9	14.2 23.6	0.07 0.18	0.44 0.97	0.07 0.18	0.44 0.97	0.14 0.24	0.16 0.26	2
MSB 25 TS MSB 25 S	23	18	60	20	11×9×7	15.6 22.3	22.1 36.9	0.13 0.35	0.91 1.87	0.13 0.35	0.91 1.87	0.26 0.43	0.29 0.45	3
MSB 30 TS MSB 30 S	28	23	80	20	11×9×7	23.1 32.9	31.8 53.1	0.23 0.60	1.39 3.15	0.23 0.60	1.39 3.15	0.45 0.74	0.52 0.82	4.4
MSB 35 TS MSB 35 S MSB 35 LS	34	27.5	80	20	14×12×9	35.7 52.0 63.6	44.0 75.5 100.6	0.34 0.93 1.60	2.81 5.47 8.67	0.34 0.93 1.60	2.81 5.47 8.67	0.75 1.28 1.67	0.81 1.13 1.49	6.2

MİNYATÜR TİP PASLANMAZ ÇELİK SERİSİ



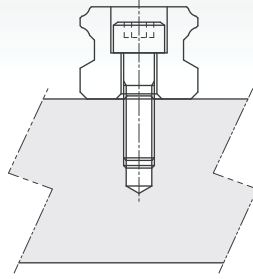
Unit: mm

Model No.	Dış ölçüler					Araba ölçüleri					
	Yükseklik H	Genişlik W	Uzunluk L	W ₂	H ₂	B	C	S × l	L ₁	T	Yağdanlık
MSC 7 M MSC 7 LM	8	17	23.6 33.1	5	1.5	12	8 13	M2×2.5	18.4 27.9	3.5	Ø0.8
MSC 9 M MSC 9 LM	10	20	31.1 41.3	5.5	2.2	15	10 16	M3×3	25.8 36	4.5	Ø1
MSC 12 M MSC 12 LM	13	27	34.6 47.6	7.5	3	20	15 20	M3×3.6	28 41	6	Ø1.5
MSC 15 M MSC 15 LM	16	32	43.5 60.5	8.5	4	25	20 25	M3×4.2	36.1 53.1	7	G-M3

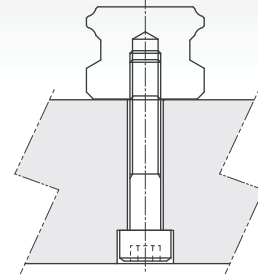
Model No.	Ray ölçüleri					Temel yük oranı		Statik moment oranı				Ağırlık		
	Genişlik W ₁	Yükseklik H ₁	Hatve P	E std.	D × h × d	Dinamik C kN	Statik C ₀ kN	M _p N-m		M _y N-m		M _r N-m	Araba g	Ray kg/m
								Tek	Çift	Tek	Çift			
MSC 7 M MSC 7 LM	7 ⁰ _{-0.05}	4.7	15	5	4.2×2.3×2.4	0.94 1.36	1.28 2.24	2.6 7.4	15.33 37.92	2.6 7.4	15.33 37.92	4.7 8.3	13 18	0.22
MSC 9 M MSC 9 LM	9 ⁰ _{-0.05}	5.5	20	7.5	6×3.3×3.5	1.71 2.52	2.24 3.92	6.1 17.4	33.46 84.63	6.1 17.4	33.46 84.63	10.8 18.8	29 39	0.33
MSC 12 M MSC 12 LM	12 ⁰ _{-0.05}	7.5	25	10	6×4.5×3.5	2.62 3.77	3.52 5.72	11.4 28.3	63.96 141.52	11.4 28.3	63.96 141.52	22.2 36.0	40 60	0.63
MSC 15 M MSC 15 LM	15 ⁰ _{-0.05}	9.5	40	15	6×4.5×3.5	4.52 6.47	5.70 9.26	24.7 61.0	132.17 295.87	24.7 61.0	132.17 295.87	44.4 72.2	71 100	1.02

RAY TİPİ

Havşa Tip (R, U Tipi) / Üstten Bağlama



Dişli Vida Delikli (T Tipi) / Alttan Bağlama



KODLARIN AÇILIMI

(1) Değiştirilemez Tip / Non-Interchangeable Type

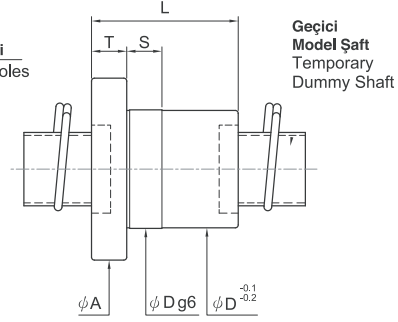
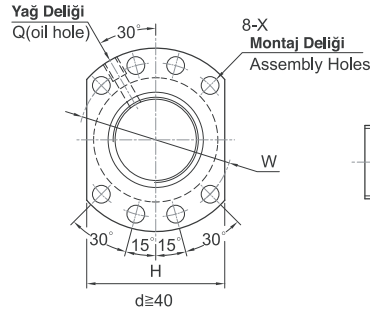
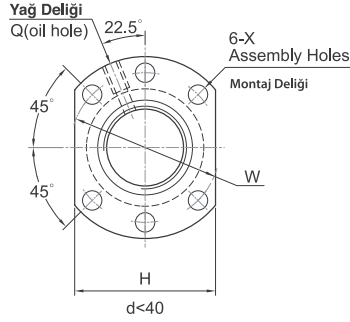
	MSB	25	E	2	SS	F0	A	+ R	1200	- 20	/ 40	P	A	/CC	II
Seri / Series:	MSB														
Boyut / Size:	15, 20, 25, 30, 35														
Araba tipi: (1) Orta yük TE: Flanş tip, üstten veya alttan montaj TS: Kare tip															
(2) Aşırı ağır yük E: Flanş tip, üstten veya alttan montaj S: Kare tip															
Ray başına araba sayısı: 1, 2, 3															
Araba toz koruma seçeneği: Simge yok, UU, SS, ZZ, DD, KK, LL, RR															
Ön yük: FC(hafif ön yük), F0(Orta ön yük), F1(Ağır ön yük)															
Özel araba kodu: Simge yok, A, B, . . .															
Ray tipi: R, U ⁽¹⁾ (Havşa Tipi), T (Dişli Vida Delikli Tip)															
Ray uzunluğu (mm)															
Başlangıç tarafında Ray delik hatvesi (E1, bakınız Şekil 12.2)															
Uç tarafında Ray delik hatvesi (E2, bakınız Şekil 12.2)															
Hassaslık derecesi: N, H, P, SP, UP															
Özel ray kodu: Simge yok, A, B															
Ray toz koruma seçeneği: Simge yok, /CC, /MC															
Eksen başına ray sayısı:															



Vidalı Miller

FSIN TİP

VİDALI MİLLER

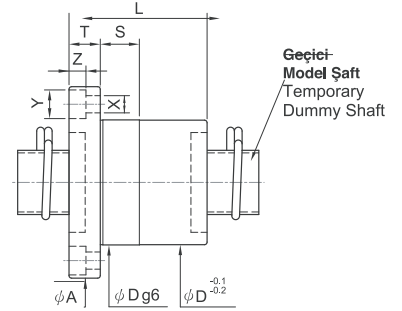
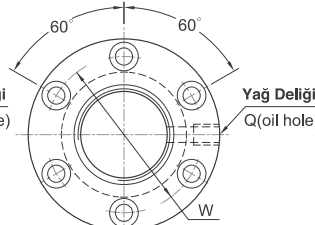
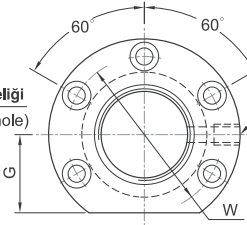
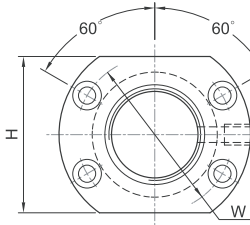


Birim / Unit: mm

Vida Çapı Screw Size		Bilya Çapı Ball Dia.	Etkin Tur tur x sıra Effective Turns circuit x row	Temel Yük Oranı Basic Rate Load (kgf)		Bilyalı Somun Ölçüsü Ballnut Dimension										
D.Ç. O.D.	Hatve Lead			Dinamik Dynamic (1x10 ⁶ Rev.) Ca	Statik Static Co	D.Ç. O.D. D	Boy Length L	Flanş Flange A T W H				Montaj Deligi Assembly Hole X	Uyum Fit S	Yağ Deligi Oil Hole Q	Sertlik Stiffness kgi/μm	Civata Model No. Screw Model No.
16	5	3.175	3	570	1030	28	42	48	10	38	40	5.5	12	M6x1P	17	FSIN1605-3.0P
20	5	3.175	4	830	1890	36	50	58	12	47	44	5.5	12	M6x1P	21	FSIN2005-4.0P
25	5	3.175	4	940	2420	40	50	62	12	51	48	6.5	12	M6x1P	26	FSIN2505-4.0P
	10	4.762	4	1560	3550	40	85	62	12	51	48	6.5	15	M6x1P	27	FSIN2510-4.0P
32	5	3.175	4	1050	3390	50	50	80	12	65	62	9	12	M6x1P	32	FSIN3205-4.0P
	10	6.35	4	2510	5880	50	80	80	13	65	62	9	16	M6x1P	34	FSIN3210-4.0P
40	5	3.175	4	1180	4390	63	54	93	15	78	70	9	12	M8x1P	38	FSIN4005-4.0P
	10	6.35	4	2430	7860	63	82	93	15	78	70	9	15	M8x1P	41	FSIN4010-4.0P
50	10	6.35	4	2770	10290	75	88	110	18	93	85	11	16	M8x1P	50	FSIN5010-4.0P
	10	6.35	6	3920	15440	75	106	110	18	93	85	11	16	M8x1P	73	FSIN5010-6.0P

FSIW TİP

VİDALI MİLLER

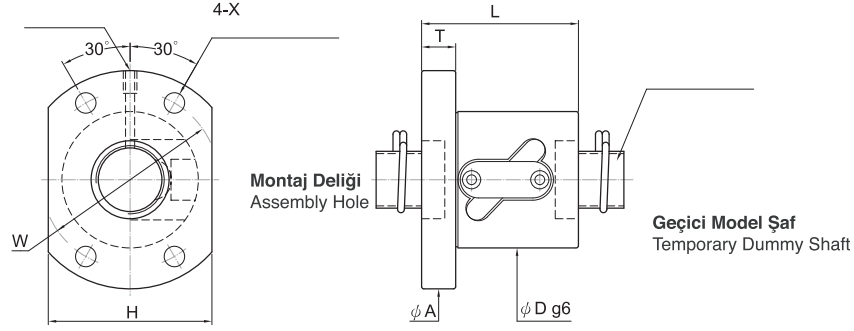


Birim / Unit: mm

Vida Çapı Screw Size		Bilya Çapı Ball Dia.	Etkin Tur tur x sıra Effective Turns circuit x row	Temel Yük Oranı Basic Rate Load (kgf)		Bilyalı Somun Ölçüsü Ballnut Dimension													
D.Ç. O.D.	Hatve Lead			Dinamik Dynamic (1x10 ⁶ Rev.) Ca	Statik Static Co	D.Ç. O.D. D	Boy Length L	Flanş Flange A T W G H				Uyum Fit S	Montaj Deligi Assembly Hole X Y Z	Yağ Deligi Oil Hole Q	Sertlik Stiffness kgi/μm	Civata Model No. Screw Model No.			
14	4	2.381	4	400	890	26	47	46	10	36	-	-	10	4.5	8	4.5	M6x1P	18	FSIW1404-4.0P
16	5	3.175	3	570	1030	30	42	49	10	39	20	40	10	4.5	-	-	M6x1P	17	FSIW1605-3.0P
20	5	3.175	4	830	1890	34	53	57	12	45	20	40	12	5.5	9.5	5.5	M6x1P	21	FSIW2005-4.0P
25	5	3.175	4	940	2420	40	53	63.5	12	51	22	44	15	5.5	9.5	5.5	M8x1P	26	FSIW2505-4.0P
32	5	3.175	4	1050	3390	48	53	73.5	12	60	30	60	15	6.6	11	6.5	M8x1P	32	FSIW3205-4.0P
	10	6.350	4	2510	5880	54	90	88	16	70	34	68	15	9	14	8.5	M8x1P	34	FSIW3210-4.0P
40	5	3.175	4	1180	4390	55	56	88.5	16	72	29	58	15	9	14	8.5	M8x1P	38	FSIW4005-4.0P
	10	6.350	4	2630	7860	64	93	106	18	84	43	86	20	11	17.5	11	M8x1P	41	FSIW4010-4.0P
50	10	6.350	4	2770	10290	74	93	116	18	94	42	84	20	11	17.5	11	M8x1P	50	FSIW5010-4.0P

FSWW TİP

VİDALI MİLLER

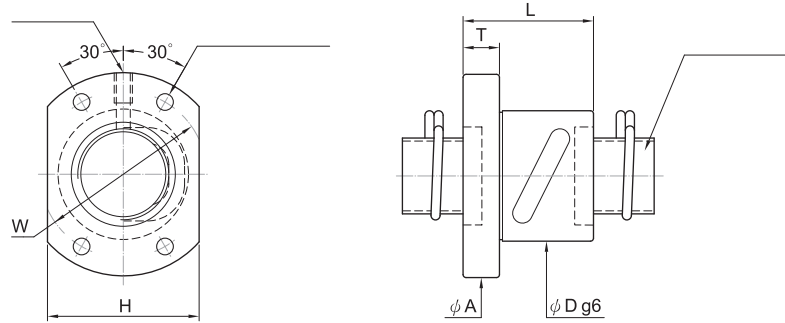


Birim / Unit: mm

Vida Çapı Screw Size		Bilya Çapı Ball Dia.	Etkin Tur tur x sıra Effective Turns circuit x row	Temel Yük Oranı Basic Rate Load (kgf)		Bilyalı Somun Ölçüsü Ballnut Dimension									
D.Ç. O.D.	Hatve Lead			Dinamik Dynamic (1x10 ⁶ Rev.) Ca	Statik Static Co	D.Ç. O.D.	Boy Length	Flanş Flange			Montaj Deliği Assembly Hole X	Yağ Deliği Oil Hole Q	Sertlik Stiffness kgf/μm	Civata Model No. Screw Model No.	
D	L	A	T	W	H										
14	4	2.381	3.5x1	500	1100	35	42	57	10	45	40	4.5	M6x1P	15	FSWW1404-3.5P
	5	3.175	2.5x1	515	990	40	40	57	10	45	40	4.5	M6x1P	11	FSWW1405-2.5P
20	5	3.175	2.5x1	625	1450	44	41	67	10	55	52	5.5	M6x1P	15	FSWW2005-2.5P
	10	4.762	2.5x1	1100	2200	52	61	82	12	67	64	6.6	M6x1P	16	FSWW2010-2.5P
25	5	3.175	2.5x1	720	1830	50	41	73	11	61	56	6.6	M6x1P	18	FSWW2505-2.5P
			2.5x2	1120	3710										37
	10	6.350	2.5x1	1720	3590	60	69	96	15	78	72	9	M6x1P	21	FSWW2510-2.5P
			2.5x2	3200	7170									40	FSWW2510-5.0P
32	10	6.350	2.5x1	1930	4680	67	97	103	15	85	78	9	M6x1P	25	FSWW3210-2.5P
			2.5x2	3130	9410										49
40	10	6.350	2.5x2	3520	12000	76	100	116	17	96	88	11	M6x1P	59	FSWW4010-5.0P
50	10	6.350	2.5x2	3900	15000	88	101	128	18	108	100	11	M6x1P	72	FSWW5010-5.0P
			3.5x2	4940	21000										98

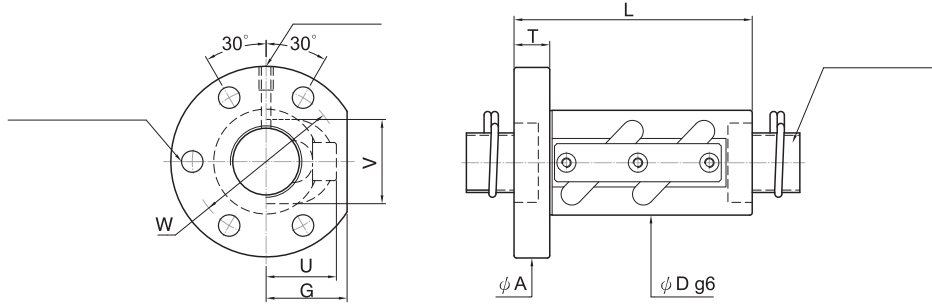
FSBW TİP

VİDALI MİLLER



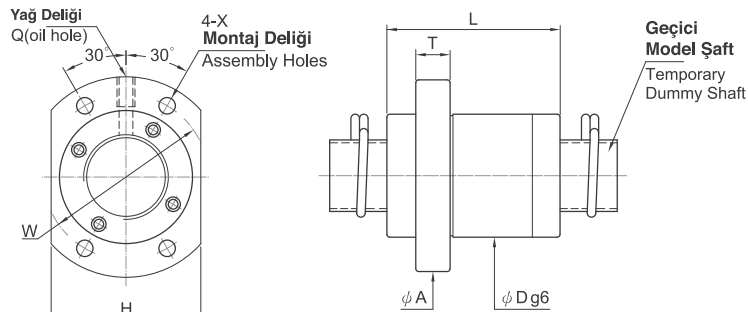
Birim / Unit: mm

Vida Çapı Screw Size		Bilya Çapı Ball Dia.	Etkin Tur tur x sıra Effective Turns circuit x row	Temel Yük Oranı Basic Rate Load (kgf)		Bilyalı Somun Ölçüsü Ballnut Dimension									
D.Ç. O.D.	Hatve Lead			Dinamik Dynamic (1x10 ⁶ Rev.) Ca	Statik Static Co	D.Ç. O.D.	Boy Length	Flanş Flange			Montaj Deliği Assembly Hole X	Yağ Deliği Oil Hole Q	Sertlik Stiffness kgf/μm	Civata Model No. Screw Model No.	
D	L	A	T	W	H										
12	5	2.000	2.5x1	270	350	26	40	47	10	37	30	4.5	M6x1P	8.2	FSBW1205-2.5P
14	4	2.381	3.5x1	500	1100	31	40	50	10	40	37	4.5	M6x1P	15	FSBW1404-3.5P
	5	3.175	2.5x1	515	990	32	40	50	10	40	38	4.5	M6x1P	11	FSBW1405-2.5P
16	5	3.175	2.5x1	570	1130	34	40	54	10	44	40	4.5	M6x1P	13	FSBW1605-2.5P
20	4	2.381	2.5x1	415	850	40	41	59	10	50	46	4.5	M6x1P	14	FSBW2004-2.5P
	5	3.175	2.5x1	620	1450	40	40	59	10	50	46	4.5	M6x1P	16	FSBW2005-2.5P
25	4	2.381	2.5x1	450	980	43	41	67	10	55	50	4.5	M6x1P	17	FSBW2504-2.5P
	5	3.175	2.5x1	720	1830	43	40	67	10	55	50	5.5	M6x1P	18	FSBW2505-2.5P

FSVW TİP
VİDALI MİLLER


Birim / Unit: mm

Vida Çapı Screw Size		Bilya Çapı Ball Dia.	Etkin Tur tur x sıra Effective Turns circuit x row	Temel Yük Oranı Basic Rate Load (kgf)		Bilyalı Somun Ölçüsü Ballnut Dimension										Sertlik Stiffness kgf/μm	Civata Model No. Screw Model No.
D.Ç. O.D.	Hatve Lead			Dinamik Dynamic (1x10 ⁶ Rev.) Ca	Statik Static Co	D.Ç. O.D. D	Boy Length L	Flanş Flange A T W			Return Tube Return Tube U V		Montaj Deligi Assembly Hole X	Yağ Deligi Oil Hole Q			
14	4	2.381	3.5x1	500	1100	25	42	55	10	40	19	19	21	4.5	M6x1P	15	FSVW1404-3.5P
	5	3.175	2.5x1	515	990	30	43	50	10	40	22	22	21	4.5	M6x1P	11	FSVW1405-2.5P
16	5	3.175	2.5x1	550	1140	34	43	54	10	44	24	20	22	4.5	M6x1P	13	FSVW1605-2.5P
20	5	3.175	2.5x1	625	1450	40	43	60	12	50	28	28	27	4.5	M6x1P	15	FSVW2005-2.5P
	10	4.762	2.5x1	1100	2200	40	60	67	12	53	30	30	30	6.6	M6x1P	16	FSVW2010-2.5P
25	5	3.175	2.5x1	720	1830	42	45	71	12	57	28	28	32	6.6	M6x1P	18	FSVW2505-2.5P
			2.5x2	1120	3710		60										37
25	10	6.350	2.5x1	1720	3590	44	68	79	15	62	34	34	37	9.0	M6x1P	21	FSVW2510-2.5P
			2.5x2	3200	7170		98										40
32	10	6.350	2.5x1	1930	4680	55	72	97	18	75	39	39	44	11	M6x1P	25	FSVW3210-2.5P
			2.5x2	3130	9410		101										49
40	10	6.350	3.5x2	4450	16800	65	123	114	20	90	44	44	52	14	M6x1P	81	FSVW4010-7.0P
50	10	6.350	3.5x2	4940	21000	80	125	138	22	110	52	52	62	18	M6x1P	98	FSVW5010-7.0P

FSKW TİP
VİDALI MİLLER


Birim / Unit: mm

Vida Çapı Screw Size		Bilya Çapı Ball Dia.	Etkin Tur tur x sıra Effective Turns circuit x row	Temel Yük Oranı Basic Rate Load (kgf)		Bilyalı Somun Ölçüsü Ballnut Dimension										Sertlik Stiffness kgf/μm	Civata Model No. Screw Model No.
D.Ç. O.D.	Hatve Lead			Dinamik Dynamic (1x10 ⁶ Rev.) Ca	Statik Static Co	D.Ç. O.D. D	Boy Length L	Flanş Flange A T W			H	Montaj Deligi Assembly Hole X	Yağ Deligi Oil Hole Q				
15	10	3.175	2.8x2	1000	2570	34	44	57	10	45	40	5.5	M6x1P	26	FSKW1510-5.6P		
16	16	3.175	1.8x1	330	640	32	38	53	10	42	38	4.5	M6x1P	9	FSKW1616-1.8P		
20	20	3.175	1.8x2	780	2280	39	52	62	10	50	46	5.5	M6x1P	21	FSKW2020-3.6P		
25	25	3.969	1.8x2	1230	3570	47	62	74	12	60	56	6.6	M6x1P	27	FSKW2525-3.6P		
			1.8x4	2230	7140										52	52	52
32	32	4.762	1.8x2	1760	5500	58	78	92	15	74	68	9	M6x1P	33	FSKW3232-3.6P		
			1.8x4	3200	11000										65	65	65
40	40	6.350	1.8x2	2870	9170	73	95	114	17	93	84	11	M6x1P	42	FSKW4040-3.6P		
			1.8x4	5220	18340										81	81	81

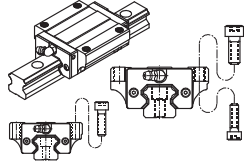
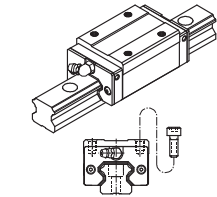
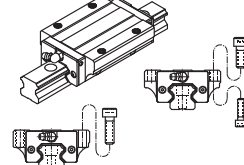
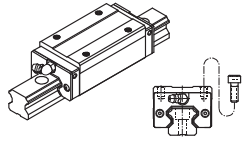
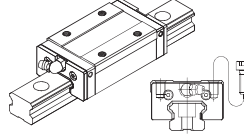
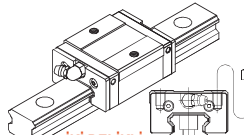
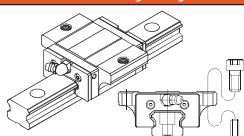
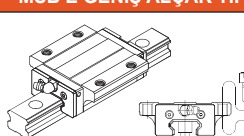
FIYAT LİSTESİ



TİP	VİDA BOY mm	SOMUN / ADET	VİDA / METRE	TİP	VİDA BOY mm	SOMUN / ADET	VİDA / METRE
FSIN 1605-3	3600	99,00 €	62,00 €	FSIW 1404-4	2800	96,00 €	62,00 €
FSIN 2005-4	4400	103,00 €	69,00 €	FSIW 1605-3	3600	99,00 €	62,00 €
FSIN 2505-4	4400	121,00 €	84,00 €	FSIW 2005-4	4400	103,00 €	69,00 €
FSIN 2510-4	4400	133,00 €	84,00 €	FSIW 2505-4	4400	121,00 €	84,00 €
FSIN 3205-4	5700	138,00 €	108,00 €	FSIW 3205-4	5700	138,00 €	108,00 €
FSIN 3210-4	5700	169,00 €	114,00 €	FSIW 3210-4	5700	169,00 €	114,00 €
FSIN 4005-4	5400	156,00 €	147,00 €	FSIW 4005-4	5400	156,00 €	147,00 €
FSIN 4010-4	5400	206,00 €	164,00 €	FSIW 4010-4	5400	206,00 €	164,00 €
FSIN 5010-4	5200	258,00 €	292,00 €	FSIW 5010-4	5200	258,00 €	292,00 €
FSIN 5010-6	5200	324,00 €	292,00 €				
				FSBW 1205-2.5	1400	160,00 €	62,00 €
FSWW 1404-3.5	2800	62,00 €	96,00 €	FSBW 1404-3.5	2800	96,00 €	62,00 €
FSWW 1405-2.5	2800	62,00 €	96,00 €	FSBW 1405-2.5	2800	96,00 €	62,00 €
FSWW 2005-2.5	4400	68,00 €	104,00 €	FSBW 1605-2.5	3600	99,00 €	62,00 €
FSWW 2010-2.5	4400	74,00 €	126,00 €	FSBW 2004-2.5	4400	103,00 €	69,00 €
FSWW 2505-2.5	4400	84,00 €	113,00 €	FSBW 2005-2.5	4400	103,00 €	69,00 €
FSWW 2505-5	4400	84,00 €	121,00 €	FSBW 2504-2.5	4400	121,00 €	84,00 €
FSWW 2510-2.5	4400	84,00 €	123,00 €	FSBW 2505-2.5	4400	121,00 €	84,00 €
FSWW 2510-5	4400	84,00 €	132,00 €				
FSWW 3210-2.5	5700	114,00 €	160,00 €	FSKW 1510-2.8	3600	85,00 €	57,00 €
FSWW 3210-5	5700	114,00 €	170,00 €	FSKW 1510-5.6	3600	313,00 €	57,00 €
FSWW 4010-5	5400	164,00 €	206,00 €	FSKW 1616-1.8	3600	131,00 €	70,00 €
FSWW 5010-5	5200	292,00 €	258,00 €	FSKW 2020-1.8	4400	131,00 €	77,00 €
FSWW 5010-7	5200	292,00 €	387,00 €	FSKW 2020-3.6	4400	260,00 €	77,00 €
				FSKW 2525-1.8	4400	143,00 €	87,00 €
FSVW 1404-3.5	2800	62,00 €	96,00 €	FSKW 2525-3.6	4400	286,00 €	87,00 €
FSVW 1405-2.5	2800	62,00 €	96,00 €	FSKW 2525-7.2	4400	572,00 €	87,00 €
FSVW 1605-2.5	3600	62,00 €	100,00 €	FSKW 3232-1.8	5700	182,00 €	117,00 €
FSVW 2005-2.5	4400	69,00 €	103,00 €	FSKW 3232-3.6	5700	363,00 €	117,00 €
FSVW 2010-2.5	4400	74,00 €	126,00 €	FSKW 3232-7.2	5700	725,00 €	117,00 €
FSVW 2505-2.5	4400	84,00 €	113,00 €	FSKW 4040-1.8	5400	221,00 €	169,00 €
FSVW 2505-5	4400	84,00 €	121,00 €	FSKW 4040-3.6	5400	442,00 €	169,00 €
FSVW 2510-2.5	4400	84,00 €	123,00 €	FSKW 4040-7.2	5400	883,00 €	169,00 €
FSVW 2510-5	4400	84,00 €	132,00 €				
FSVW 3210-2.5	5700	114,00 €	159,00 €				
FSVW 3210-5	5700	114,00 €	169,00 €				
FSVW 4010-5	5400	164,00 €	204,00 €				
FSVW 4010-7	5400	164,00 €	310,00 €				
FSVW 5010-5	5200	292,00 €	258,00 €				
FSVW 5010-7	5200	292,00 €	387,00 €				



FİYAT LİSTESİ

MODEL	FİYAT/AD.	TİP	MODEL/RAY	FİYAT/MT
MSA 15 A/E SS	33,00 €	MSA A-E GENİŞ TİP 	MSA 15 R	69,00 €
MSA 20 A/E SS	37,00 €		MSA 20 R	73,00 €
MSA 25 A/E SS	46,00 €		MSA 25 R	91,00 €
MSA 30 A/E SS	57,00 €		MSA 30 R	119,00 €
MSA 35 A/E SS	73,00 €		MSA 35 R	160,00 €
MSA 45 A/E SS	108,00 €		MSA 45 R	209,00 €
MSA 55 A/E SS	175,00 €		MSA 55 R	400,00 €
MSA 65 A/E SS	***		MSA 65 R	***
MSA S DAR TİP				
MSA 15 S SS	33,00 €		MSB 15 R	67,00 €
MSA 20 S SS	36,00 €		MSB 20 R	82,00 €
MSA 25 S SS	44,00 €		MSB 25 R	115,00 €
MSA 30 S SS	56,00 €		MSB 30 R	125,00 €
MSA 35 S SS	68,00 €		MSB 35 R	149,00 €
MSA 45 S SS	108,00 €			
MSA 55 S SS	160,00 €			
MSA LA-LE GENİŞ UZUN TİP				
MSA 20 LA/LE SS	48,00 €		MİNYATÜR ARABA VE RAYLAR	
MSA 25 LA/LE SS	62,00 €		MODEL	FİYAT
MSA 30 LA/LE SS	75,00 €		MSC 7 M/LM	32,00 €
MSA 35 LA/LE SS	86,00 €		MSC 9 M/LM	35,00 €
MSA 45 LA/LE SS	137,00 €		MSC 12 M/LM	42,00 €
MSA 55 LA/LE SS	230,00 €		MSC 15 M/LM	43,00 €
MSA 65 LA/LE SS	***			
MSA LS DAR UZUN TİP				
MSA 20 LS SS	46,00 €		MODEL/RAY	FİYAT/MT
MSA 25 LS SS	59,00 €		MSC 7 R	138,00 €
MSA 30 LS SS	66,00 €		MSC 9 R	164,00 €
MSA 35 LS SS	83,00 €		MSC 12 R	182,00 €
MSA 45 LS SS	123,00 €		MSC 15 R	200,00 €
MSA 55 LS SS	215,00 €			
MSB S DAR ALÇAK TİP				
MSB 15 S SS	33,00 €			
MSB 20 S SS	39,00 €			
MSB 25 S SS	55,00 €			
MSB 30 S SS	59,00 €			
MSB 35 S SS	65,00 €			
MSB TS DAR ALÇAK TİP				
MSB 15 TS SS	31,00 €			
MSB 20 TS SS	35,00 €			
MSB 55 TS SS	42,00 €			
MSB 30 TS SS	47,00 €			
MSB 35 TS SS	65,00 €			
MSB TE GENİŞ ALÇAK TİP				
MSB 15 TE SS	33,00 €			
MSB 20 TE SS	44,00 €			
MSB 25 TE SS	46,00 €			
MSB 30 TE SS	49,00 €			
MSB 35 TE SS	67,00 €			
MSB E GENİŞ ALÇAK TİP				
MSB 15 E SS	34,00 €			
MSB 20 E SS	40,00 €			
MSB 25 E SS	55,00 €			
MSB 30 E SS	59,00 €			
MSB 35 E SS	76,00 €			



Ballscrews / Linear Guideway

